

# Tollesby Bridge



Ready to move into

Spacious First Floor Flat

Re-decorated & Re-carpeted Throughout

Popular Coulby Newham Area

Spacious lounge and separate fitted kitchen

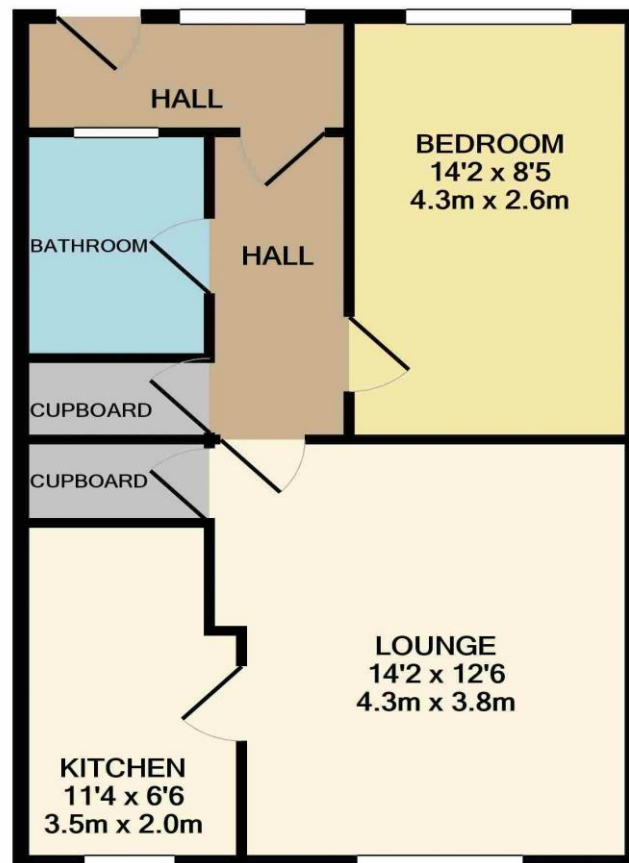
£69,950





This **FIRST FLOOR FLAT** is available for sale and benefits from being recently redecorated and re-carpeted throughout.

Ready to move into and deceptively spacious, whilst being located in this popular Coulby Newham area, the internal accommodation briefly comprises an entrance hall, inner hall, generous lounge, fitted kitchen, good double bedroom and bathroom. Steps to the front elevation approaches the entrance, whilst ample parking is available adjacent.



**TOTAL APPROX. FLOOR AREA 512 SQ.FT. (47.6 SQ.M.)**

Whilst every attempt has been made to ensure the accuracy of the floor plan contained here, measurements of doors, windows, rooms and any other items are approximate and no responsibility is taken for any error, omission, or mis-statement. This plan is for illustrative purposes only and should be used as such by any prospective purchaser. The services, systems and appliances shown have not been tested and no guarantee as to their operability or efficiency can be given  
Made with Metropix ©2019



# “The Ingleby Barwick Experts”



Tenure: Leasehold

Council Tax Band: A

EPC Rating: C



AGENTS NOTE: Every care has been taken with the preparation of these details, but they are for general guidance only. Measurements and dimensions are approximate, and any fixtures or fittings shown in photography does not infer that they are to be included within the sale. The agent has not tested any appliances or supplies and professional verification of these should be sought prior to purchase if required. These particulars do not constitute a contract or part of a contract.